

Relay Viewer

A software tool that displays relay data in real-time¹

Relay Viewer communicates with a connected SEL relay and displays the "real-time", measured and calculated data from the relay. Technicians and Engineers save time using Relay Viewer to provide needed information while performing a variety of tasks.

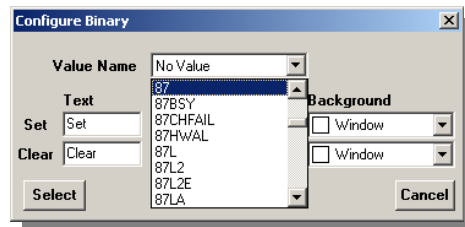
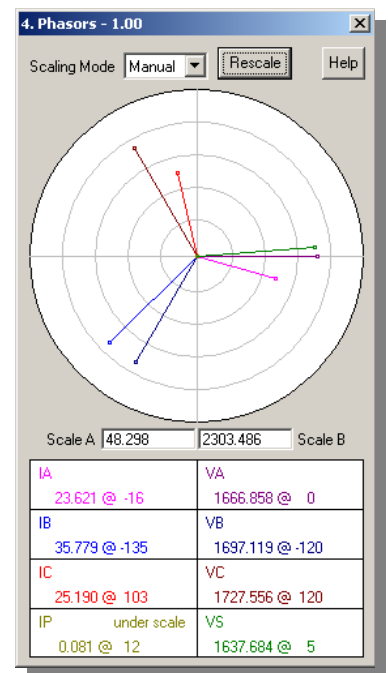
- Bench Testing
- Proving Logic
- Field Checks
- Verifying Test Setups
- Commissioning

Analog Values

Analog relay measurements and calculations are available for viewing. Analog values are displayed with limit indication, changing colors as thresholds are reached. Displayed analog value angles and magnitudes save manual calculation time.

Phasor Screens

Graphical phasor screens display selected analog values. Display up to 4 screens at a time with up to 8 values per screen. Select Auto-scaling or Manual scaling for the phasor display.



Digital Data

Monitor the digital relay word bits available in the relay. The display changes colors as the bits change state. Select intermediate logic bits to determine proper scheme operation. Select the desired bits from a pull down list. No need to memorize the bit names.

Control

SEL relays have various control bits. Relay Viewer determines what control bits are available and allows you to set, clear, or pulse them according to the relay capabilities.



Terminal

The available Terminal window allows a typical ASCII user interface to the relay. Use the Terminal window to interrogate the relay manually.

Optional Screens

Optional add-on screens display specific relay-feature data. Read and monitor relay data with timer screens, script control, reports, an SER display, Mho element display, or a User-defined Math screen².

Relay Viewer works with any device that uses the SEL Fast Meter protocol.

¹ Fast Meter data is polled from the relay to update the screens up to twice every second.

² Contact RAI for the availability of optional relay-feature screens.



Phone: (509) 334-9138 620 SE Meadow Vale Dr.
Fax: (509) 334-0698 Pullman, WA 99163

Email: Info@RelayApplication.com
Web: <http://www.RelayApplication.com>